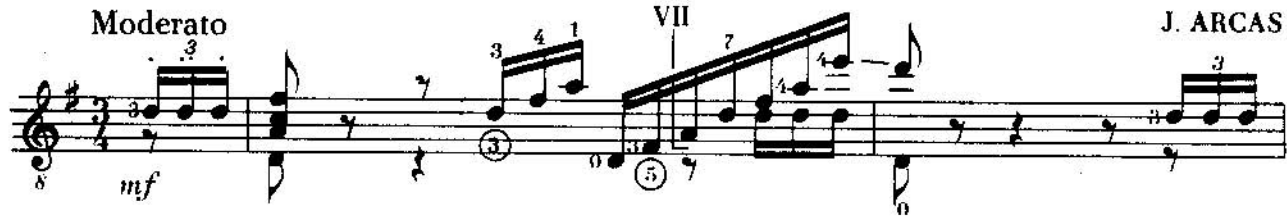


# SEN

J. ARCAS

Moderato



VII

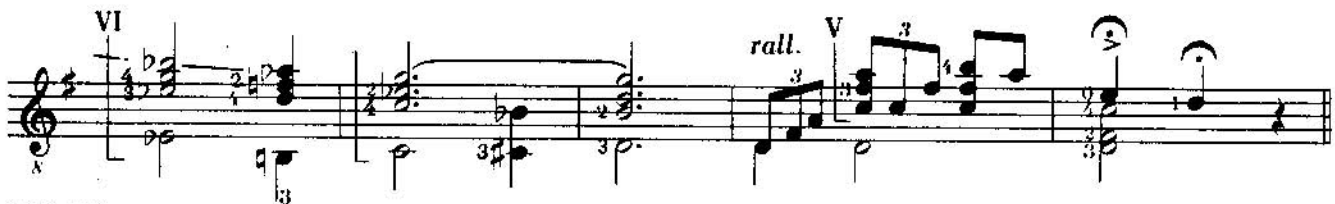
Più lento e pesante



VI

rall.

V



Moderato

rit.

First musical staff with treble clef, key signature of one sharp (F#), and 3/4 time signature. It features a melodic line with sixteenth-note runs and a bass line with chords. A *crescendo* marking is indicated by a dashed line below the staff.

a tempo

Second musical staff, continuing the piece. It includes a *diminuendo* marking above the staff.

VII

Third musical staff, featuring a section marked **VII**. It contains a circled number 2 and a double bar line.

crescendo

Fourth musical staff, featuring a *crescendo* marking below the staff.

accelerando

dim.

Fifth musical staff, featuring an *accelerando* marking above the staff.

Sixth musical staff, featuring a *diminuendo* marking above the staff. It includes a circled number 1 and a double bar line.

a tempo

Seventh musical staff, featuring an *a tempo* marking above the staff.

Eighth musical staff, continuing the melodic and harmonic development.

Ninth musical staff, concluding the page with a final melodic flourish.

First musical staff, treble clef, 8/8 time signature. It features a melodic line with eighth notes and a bass line with chords and single notes. Fingering numbers 1, 2, and 7 are visible.

Second musical staff, treble clef, 8/8 time signature. Continuation of the melodic and bass lines. Fingering numbers 7 and 4 are visible.

Third musical staff, treble clef, 8/8 time signature. Continuation of the melodic and bass lines. Fingering numbers 1, 0, and 3 are visible.

Fourth musical staff, treble clef, 8/8 time signature. Continuation of the melodic and bass lines. Fingering numbers 4, 7, and 3 are visible.

Fifth musical staff, treble clef, 8/8 time signature. Continuation of the melodic and bass lines. Fingering numbers 3, 2, and 6 are visible.

Sixth musical staff, treble clef, 8/8 time signature. Continuation of the melodic and bass lines. Fingering numbers 1, 3, and 3 are visible. The section is labeled "VII" at the end.

Seventh musical staff, treble clef, 8/8 time signature. Continuation of the melodic and bass lines. Fingering numbers 0, 3, and 1 are visible. The section is labeled "II" at the end.

Eighth musical staff, treble clef, 8/8 time signature. Continuation of the melodic and bass lines. Fingering numbers 0, 3, 4, 0, 1, 3, and 4 are visible.

Ninth musical staff, treble clef, 8/8 time signature. Continuation of the melodic and bass lines. Fingering numbers 2, 3, 0, 2, 3, 3, 1, and 4 are visible. The section ends with the instruction "rall." (rallentando).

*a tempo*

This section of the musical score consists of seven staves. The first staff is marked with a treble clef, a key signature of one sharp (F#), and a common time signature (C). The tempo marking *a tempo* is positioned above the first staff. The music features a complex rhythmic pattern with many sixteenth notes, often beamed in groups of four. The bass line consists of quarter notes and half notes. The second staff has a '7' below the first measure. The third staff has a '7' below the first measure and a '2#' below the second measure. The fourth staff has a '7' below the first measure, a '3#' below the second measure, and a '3' below the third measure. The fifth staff has a '4' below the first measure, a '1' below the second measure, and a '4' below the third measure. The sixth staff has a '2#' below the first measure and a '3' below the second measure. The seventh staff has a '4' below the first measure, a '2' below the second measure, a '0' below the third measure, a '7' below the fourth measure, a '3#' below the fifth measure, and a '3' below the sixth measure.

*ritard.*

This section of the musical score consists of one staff. It is marked with a treble clef, a key signature of one sharp (F#), and a common time signature (C). The tempo marking *ritard.* is positioned above the first staff. The music features a complex rhythmic pattern with many sixteenth notes, often beamed in groups of four. The bass line consists of quarter notes and half notes. There are '3' markings below the first and second measures.

*a tempo*

This section of the musical score consists of one staff. It is marked with a treble clef, a key signature of one sharp (F#), and a common time signature (C). The tempo marking *a tempo* is positioned above the first staff. The music features a complex rhythmic pattern with many sixteenth notes, often beamed in groups of four. The bass line consists of quarter notes and half notes. There are '7' markings below the first and second measures.

2

VII

3

4

3

3

4

1

3

4

3

pp

pp

ff